



Basic Skills Practice

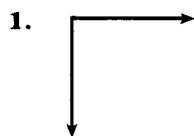
Angles and Angle Relationships, Part 1

You can classify angles by their measures. Study the table below.

Angle or angle pairs	Name	Definition
	acute angle	An acute angle is an angle that measures more than 0° and less than 90° .
	right angle	A right angle measures exactly 90° .
	obtuse angle	An obtuse angle measures more than 90° and less than 180° .
	straight angle	A straight angle measures exactly 180° .
	complementary angles	Two angles are complementary if the sum of their measures is 90° .
	supplementary angles	Two angles are supplementary if the sum of their measures is 180° .
	vertical angles	Vertical angles are pairs of opposite angles formed by intersecting lines. They have equal measures. Angles A and C are vertical angles.
	adjacent angles	Adjacent angles have a common vertex and side, and no common interior points. Angles A and B are adjacent angles.

The sum of the measures of the angles inside a triangle equals 180° .

Classify each angle as acute, right, obtuse, or straight.

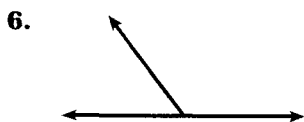


3. 35° _____

4. 180° _____

5. 90° _____

Tell whether each pair of angles is complementary, supplementary, or neither.



8. $115^\circ, 65^\circ$ _____

9. $45^\circ, 65^\circ$ _____

10. $55^\circ, 25^\circ$ _____